



**KENSINGTON**<sup>®</sup>  
Finest Properties International

# Sea view villa with pool in El Terreno, Palma de Mallorca



## general:

---

<b>object number external:</b>	KPP07211	<b>Date:</b>	26.07.2024
<b>usage:</b>	habitation	<b>marketing method:</b>	purchase
<b>property:</b>	House	<b>construction year:</b>	1959
<b>place:</b>	07015 Palma de Mallorca	<b>available from:</b>	Immediately
<b>living space:</b>	299,00 m <sup>2</sup>	<b>Floor space:</b>	684,00 m <sup>2</sup>
<b>Total size of site:</b>	426,00 m <sup>2</sup>	<b>Number of Rooms:</b>	10,0
<b>Number of bedrooms:</b>	4,0	<b>Number of bathrooms:</b>	4,0
<b>number of parking spaces:</b>	2,0	<b>Condition:</b>	groomed

## prices:

---

**purchase price:** 2.150.000,00 €

## energy certificate:

---

**beaconing:** gas

## contact person:

---

<b>name:</b>	Kensington Palma	<b>street:</b>	
<b>place:</b>		<b>phone:</b>	+34 971674306
<b>fax number:</b>	0034971673040	<b>Email:</b>	palma@kensington-international.com

## Infrastructure:

---

## Description:

---

This sea view VILLA with pool has a quiet location in the artists' quarter EL TERRENO, Palma de Mallorca. It is an ideal family residence for year-round living, and it also generates good rental income thanks to HOLIDAY RENTAL LICENCE.

It is a SPACIOUS HOUSE with good vibrations. Large windows on two sides allow for inside-out-living. The sunny outdoor spaces with decent privacy are a blast: terrace in front of the living area (60m<sup>2</sup>), lounge/pool terrace in the rear (80m<sup>2</sup>), huge rooftop terrace (90m<sup>2</sup>), tower terrace (15m<sup>2</sup>). Except for the pool terrace, all TERRACES HAVE SEA VIEW. The POOL measures 8x3 m.

Layout of the villa (approx. 299m<sup>2</sup> + 140m<sup>2</sup> of basement with guest apartment & garage): on the main level, living/dining area, eat-in kitchen, gallery, TV room, 3 twin bedrooms, 3 bathrooms (2 en suite), storeroom; on the upper level, 1 twin bedroom with bathroom en suite; in the basement, independent GUEST APARTMENT (living/dining/kitchen, 3 twin bedrooms, 2 bathrooms), GARAGE for 2 cars. Equipment: FURNITURE, exposed beams, laminate floors, fireplaces, built-in wardrobes, double glazing, CENTRAL HEATING, AC hot/cold.

Please ask us for further information or to arrange a viewing. We will not assume any liability for the information provided. Kensington reference: KPP07211

## Location:

---

El Terreno, a famous residential area to the west of Palma, is located around 2 kilometers from the city center. Once the preferred destination for wealthy and prominent personalities, the district is characterized by magnificent old villas and historic buildings. El Terreno has a lively atmosphere with many bars, restaurants and cultural facilities and has always been a meeting place for artists and intellectuals. The elevated location on the slope of the Castell de Bellver offers impressive views of the bay of Palma and the city. The nearby Bellver Park offers plenty of space for relaxation and sporting activities. Thanks to its rich history and prime location, El Terreno remains a sought-after residential area.

## images

---

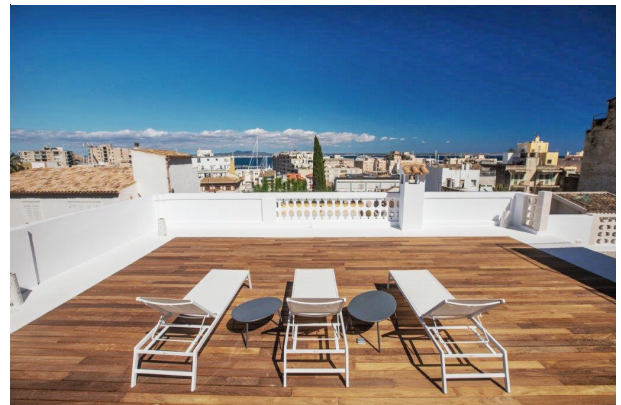


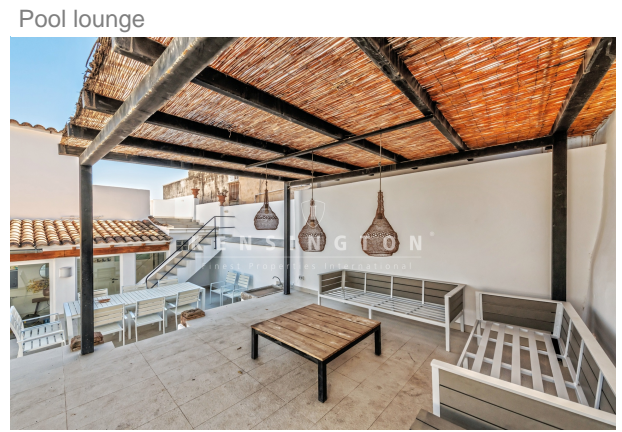


Pool lounge



Upper rooftop terrace





Gallery towards pool





Terrace in front of living area



Additional sitting room



DSC\_1845



Rooftop bedroom





Rooftop terrace



Rooftop terrace



Rooftop terrace



